

JEONGDO

Electric Actuator

JQ Series

Jeongdo Machinery is developing superior quality, top performance, reliable products for the future of the valve industry in Korea.



Long history, expertise, select engineering.



JEONGDO
Machinery Co., Ltd.

Introduction

Every product at Jeongdo Machinery is produced under the philosophy that commitment to quality is the top priority. As a KS (Korean Industrial Standards), ISO 9001 certified and KTC Q-mark business, we constantly strive to improve our quality management systems to reach the target of zero defects. Additionally, through research and development efforts, we continuously endeavor to produce higher-quality lower-priced products. Our fast delivery and prompt A/S response system ensures reduction in delays of construction plans for our customers. Jeongdo Machinery Co., Ltd. is committed to holistic excellence which includes premiere technological development, quality improvement, production management, sales, and A/S under the goal of being the leading global provider of industrial butterfly valves. Thank You

Jeongdo Machinery Co., Ltd. All Employees

Information

- **CEO** : Junggho Nam • **Address** : 121 Hwanggeum 2-ro, Yangchon-eup, Gimpo-si, Gyeonggi-do, Korea
- **Date of establishment** : July 1990 • **Homepage**: www.jdvalve.co.kr
- **TEL** : 031-986-4309 • **FAX** : 031-986-4308 • **E-mail** : jeongdo@jdvalve.co.kr

History 1990

- 1990.07 Jeongdo Co., Ltd. is established in Seoul, South Korea
- 1992.07 Production of high performance butterfly valves begins
- 1995.11 Production of Industrial butterfly valve begins

2010

- 2010.07 R&D laboratory opens its doors
- 2011.01 ALDC12 body butterfly valve production begins
- 2012.10 Obtained KC(Korea Certification) from Korea Water And Wastewater Works Association (KWWA)
- 2013.01 Relocation to new Jeongdo Machinery Co., Ltd. factory (Gimpo-si, Gyeonggi-do, Korea)
- 2013.08 KS B 2813 (450mm~600mm) Certification obtained
- 2013.11 Received Presidential Commendation for the 39th National Quality Award
- 2014.04 Certified CP(Conformity Product)by Korea Water And Wastewater Works Association (KWWA)
- 2016.01 Received Material Reliability Certificate from Korea Reliability Society (KORAS)

1990

2000

2010

Company History

- 2000.01 ISO 9001 Certification obtained
- 2000.05 Jeongdo Machinery Co., Ltd. is established
- 2002.02 KS B 2813 (50mm~300mm) Certification obtained
- 2004.05 ISO 9001:2000 Certification obtained
- 2004.06 Certified Venture Business by Korea Ministry of SMEs and Startups
- 2004.10 Certified INNO-BIZ by Korea Ministry of SMEs and Startups
- 2005.09 Grooved Butterfly Valve production commences
- 2006.04 Designated Quality Assurance Company (Q-Mark) by Korea Testing Certification (KTC)
- 2007.01 Certified Venture Business by Korea Technology Finance Corporation (KIBO)
- 2007.11 Certified CLEAN Business Place by Korea Occupational Safety & Health Agency (KOSHA)
- 2008.04 Certified Parts and Material Reliability by Korea Agency for Technology and Standards (KATS)
- 2009.06 Designated High Quality Recommended Product by Incheon, Korea

2000

Electric Actuator JQ Series

Specification

Performance

		Worm & Wormwheel Drive		Scotch-Yoke Drive		
		JQ-010	JQ-015	JQ-020	JQ-025	JQ-030
Maximum Torque	Kgf.m	10.0	15.0	20~22	25~27	30~33
Operation Time (60Hz)	sec	12	12	22	23	24
Power Consumption	w	55	80	100	120	160
Motor Type	-	BLDC	BLDC	BLDC	BLDC	BLDC
Morot Insulation	Class	E				
Duty Cycle (IEC 60034-1, IEC 60034-8)	-	S2(30min) / S4(80%) / Proportional 300~1,200 Start/Hour				
Mounting Bore Maximum Size	mm	Double square 14 x 14		Double square 17 x 17		
Mounting Base (ISO 5211)	-	F05/F07	F05/F07	F05/F07	F05/F07	F07/F10
Weight	Kgf	2.3	2.5	4.3	4.8	4.8

Standard Specification

		Worm & Wormwheel Drive		Scotch-Yoke Drive		
		JQ-010	JQ-015	JQ-020	JQ-025	JQ-030
Enclosure		Weather-proof IP-67				
Ambient Temperature		-20℃ ~ +60℃				
Ambient Humidity		90% RH Max.(Non-Condensing)				
Input Power Supply		AC 220V (1-phase, 50/60Hz)				
Position Limit Switches		2 Switches for Open / Close (SPDT, 250 VAC / 3A Rating)				
		Open / Close Position : External Adjustable				
Position Indicator		Continuous Visual Dome Indicator				
		LED Back Light				
Over Load Protection		Built-in Thermal & Power Protection				
Travel Angle		90° ± 5°				
Manual Override	JQ-010 ~ 015	By Hexagon-Wrench / 10.5-Turns				
	JQ-020 ~ 030	By Hand-Lever (Auto De-Clutchable) / 20-Turns				
Self Locking		Dual Gearing (Worm & Leadscrew)				
Mechanical Stopper		Close : External adjustable / Open : not adjustable				
Space Heater		3~5 W 220VAC for Anti-Condensation				
Cable Entries		2-PF 1/2" TAP				
Lubrication		Grease Moly (EP TYPE)				
External Coating		Dry Powder(Polyester)				

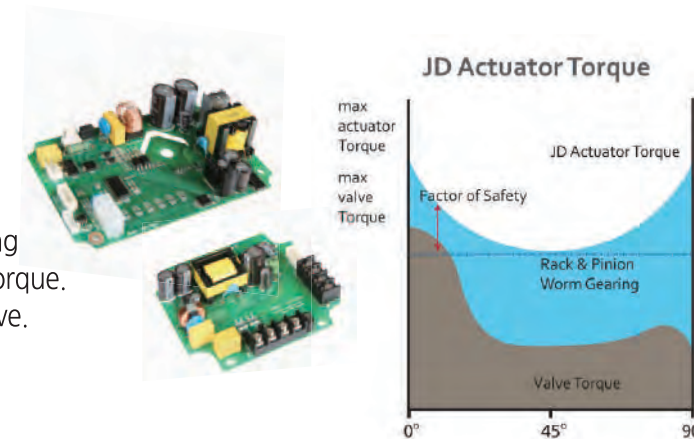
Optional Specification

		Worm & Wormwheel Drive		Scotch-Yoke Drive		
		JQ-010	JQ-015	JQ-020	JQ-025	JQ-030
Operating Time	Variation in Torque and Operating Speed					
Input Power Supply	AC 110 V (1-Phase, 50/60Hz), AC 24 V, DC24V					
Remote Position Control (Proportional Type)	Input Signal : DC 4-20mA					
	Output Signal : DC 4-20mA					
	Local Control					
	Auto-Positioning					
	Input / Output Signal Adjust					
	Actual Position Value(%) Display Bluetooth Control					

Electric Actuator JQ Series

Features

- Equipped with a control board that integrates the power supply unit, BLDC motor driving unit, and control unit.
- By Applying Scotch Yoke mechanism, Seating/Unseating Torque can be increased up to 10~20% than Rating Torque. In particular, the structure is optimized for Butterfly Valve. (Applied to JQ020 or bigger models)



Brushless DC Motor

- Applying Brushless DC Motor Low-Inertia and High-Stall Torque, It is optimized for Butterfly Valve operation. And it has high durability that can be driven as 300~1200 Start/Hours.

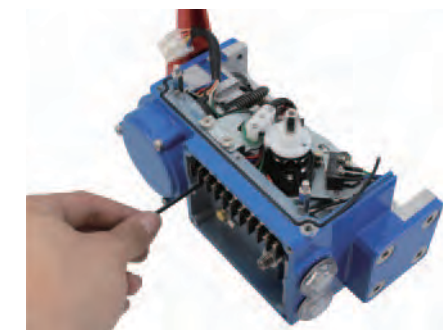


Driving mechanism

- Power Transmission System consists Worm Gearing, Hammer-Blow, Lead-Screw, Scotch-Yoke, etc. (Applied to JQ020 or bigger models)
Application of Self-Locking function by Single Worm or Double Worm-Gearing.
- Equipped with electronic torque sensing (Thermal & Power Protection) function to protect against damage due to overload that occurs during valve operation.

Simple Adjustment of Open/Close Limit Switch

- Open/Close Limit Switch setting and stopper position setting are possible with adjustment bolts installed inside the terminal box without separation of the main cover (applied to JQ-020 or bigger models)
- Open/Close Limit Switch can be set easily by removing cap without separation of the main cover. (Applied to JQ015 or smaller models)



Other features

- Enclosure : Weather-proof IP67
- Position Indicator : Dome type Visual Indicator and LED-Flickering
- Mounting Base : ISO 5211 F05, F07, F10
- Manual Override : Auto De-Clutchable & By Hexagon Wrench
- Noise : Max. 65dB (at 1m distance)
- External Terminal Block: Wiring and location adjustable

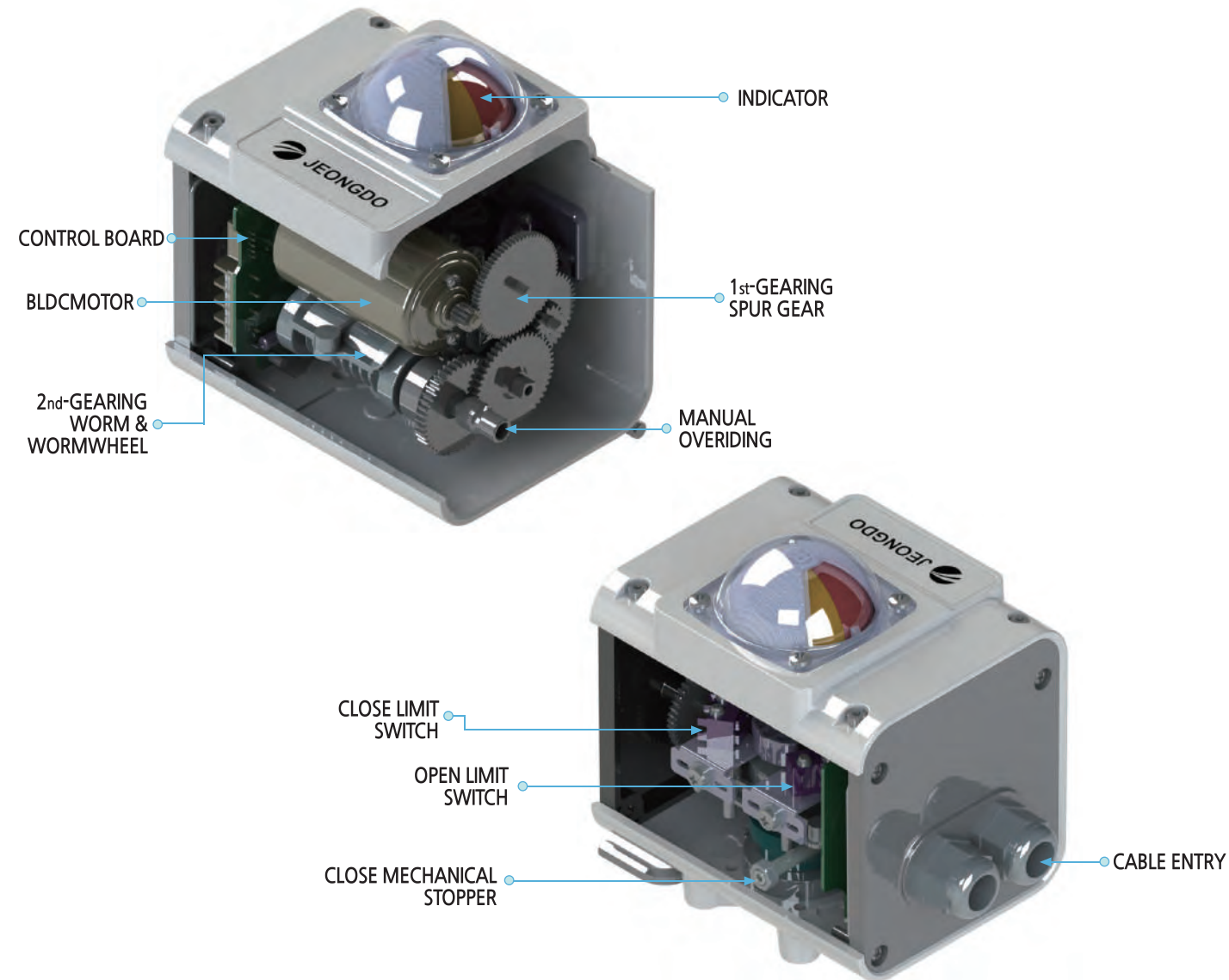


Electric Actuator JQ Series

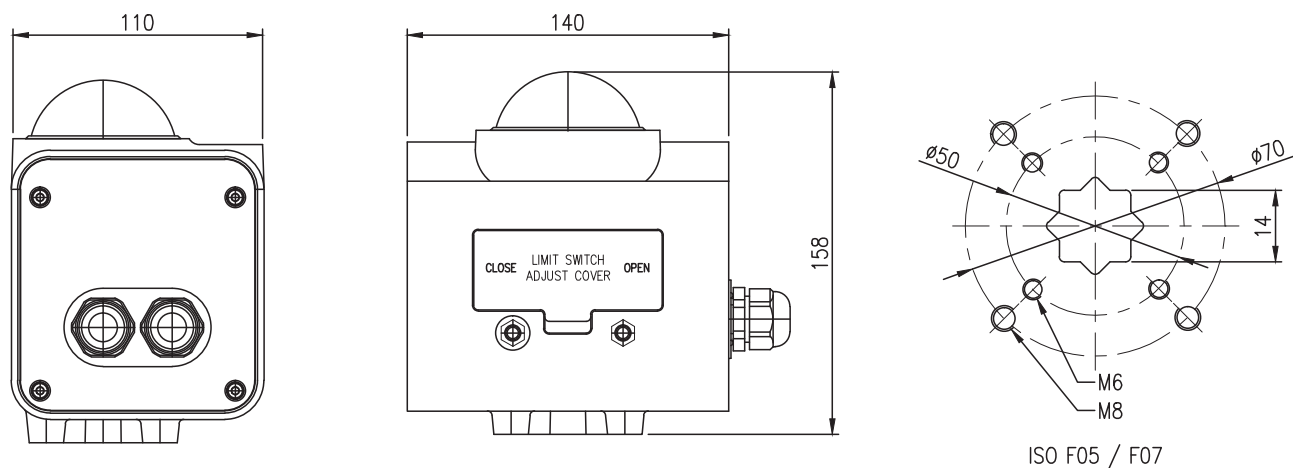
Configuration

JQ 010 | 015

Exterior



Dimension



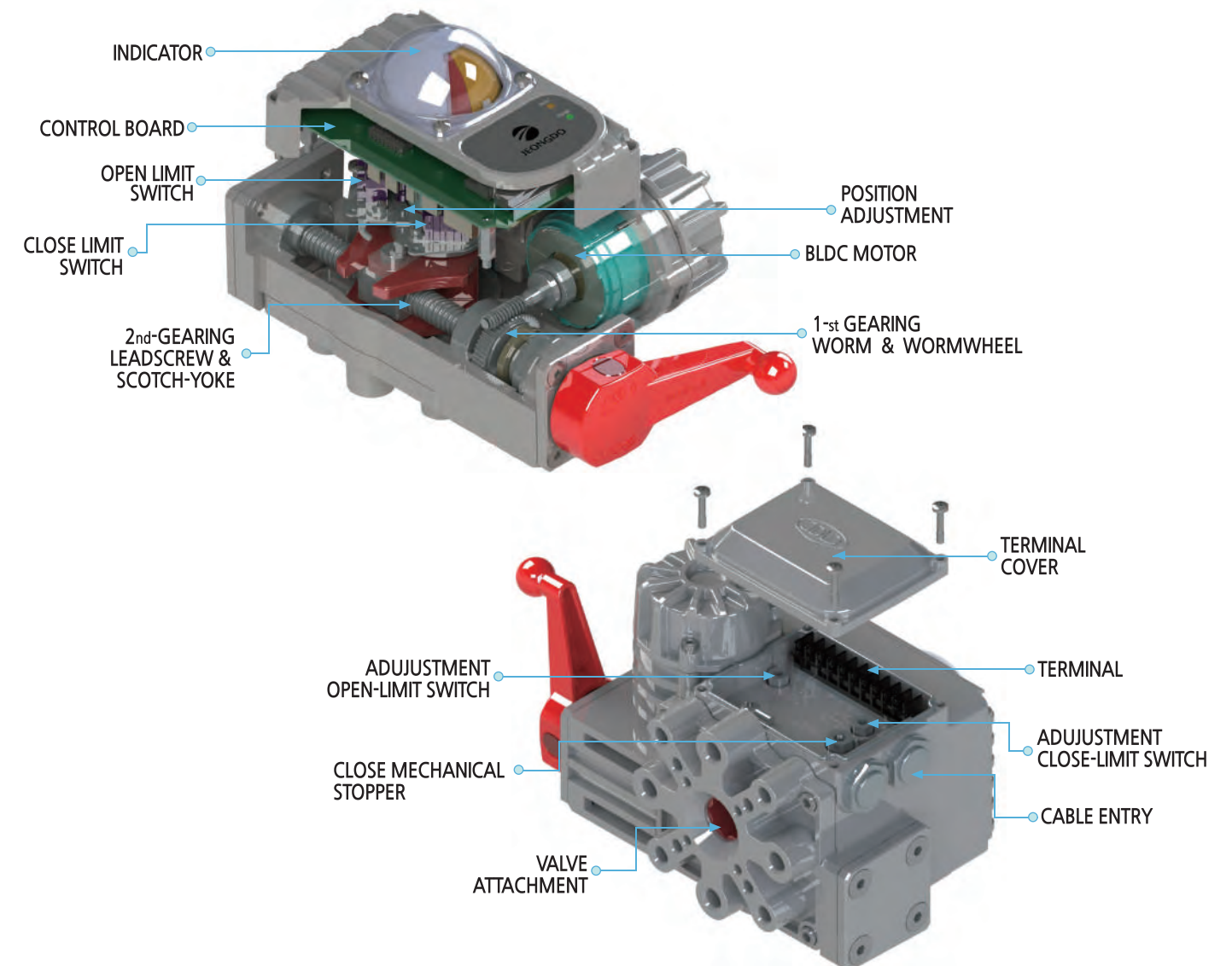
05

Electric Actuator JQ Series

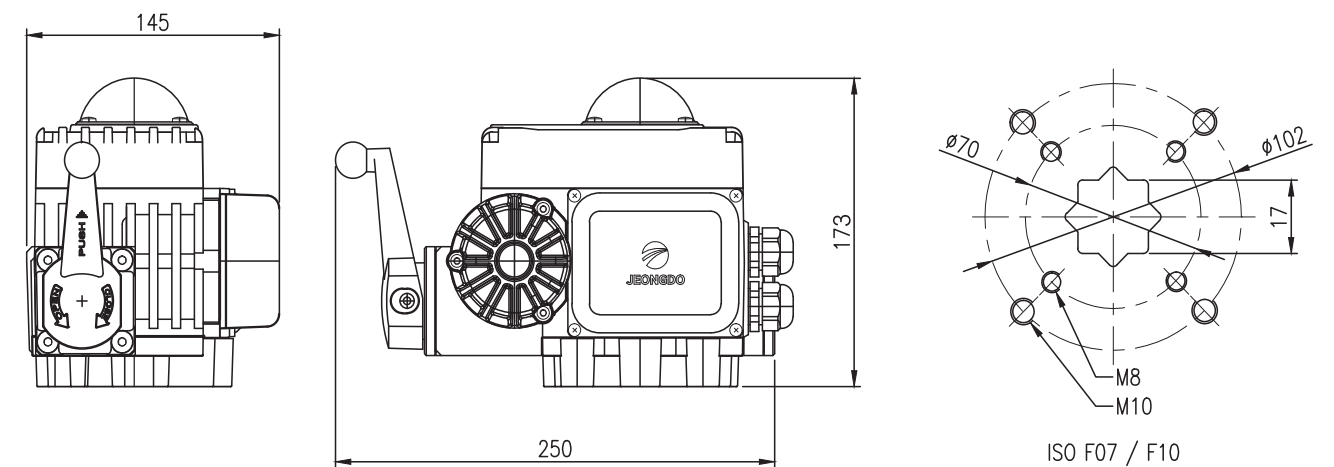
Configuration

JQ 020 | 025 | 030

Exterior



Dimension



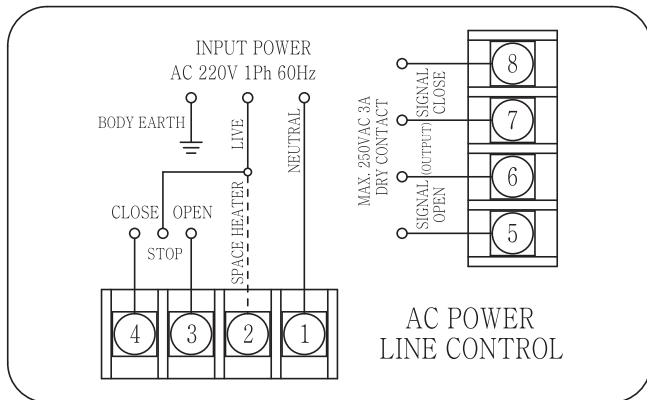
06



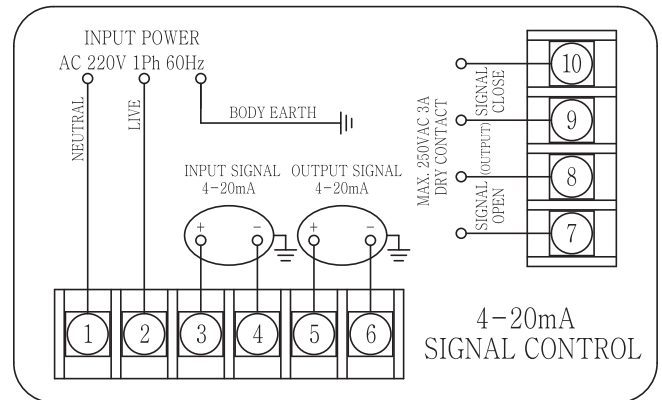
• Wiring Diagram

JQ-010~015

ON-OFF CONTROL

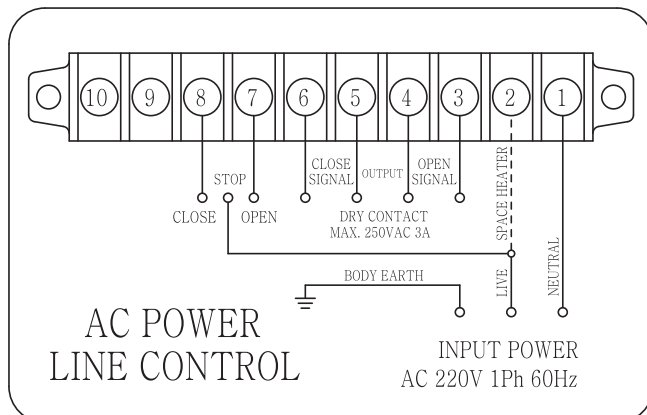


PROPORTIONAL CONTROL



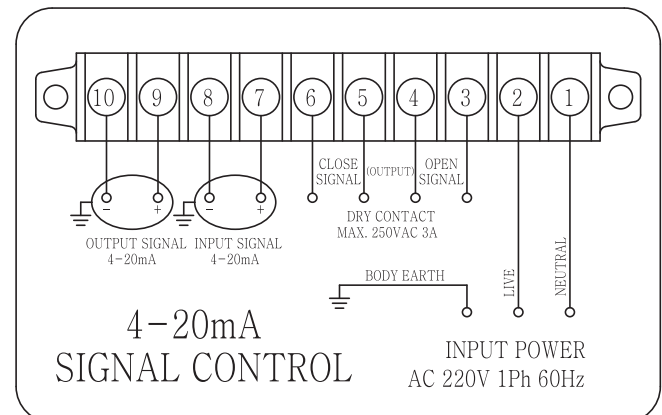
JQ-020~030

ON-OFF CONTROL



PROPORTIONAL CONTROL

mclassweb



• Product Code

